
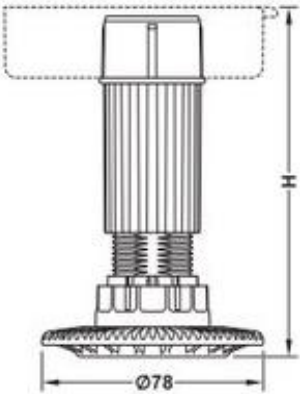

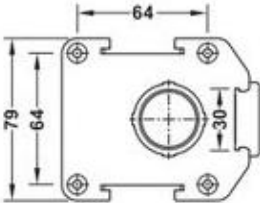
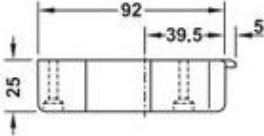
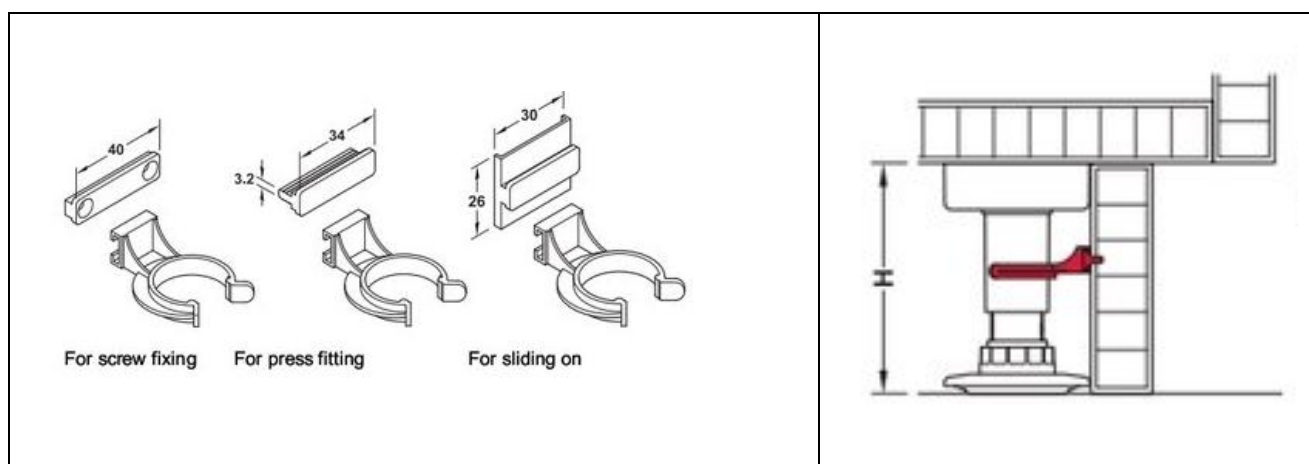
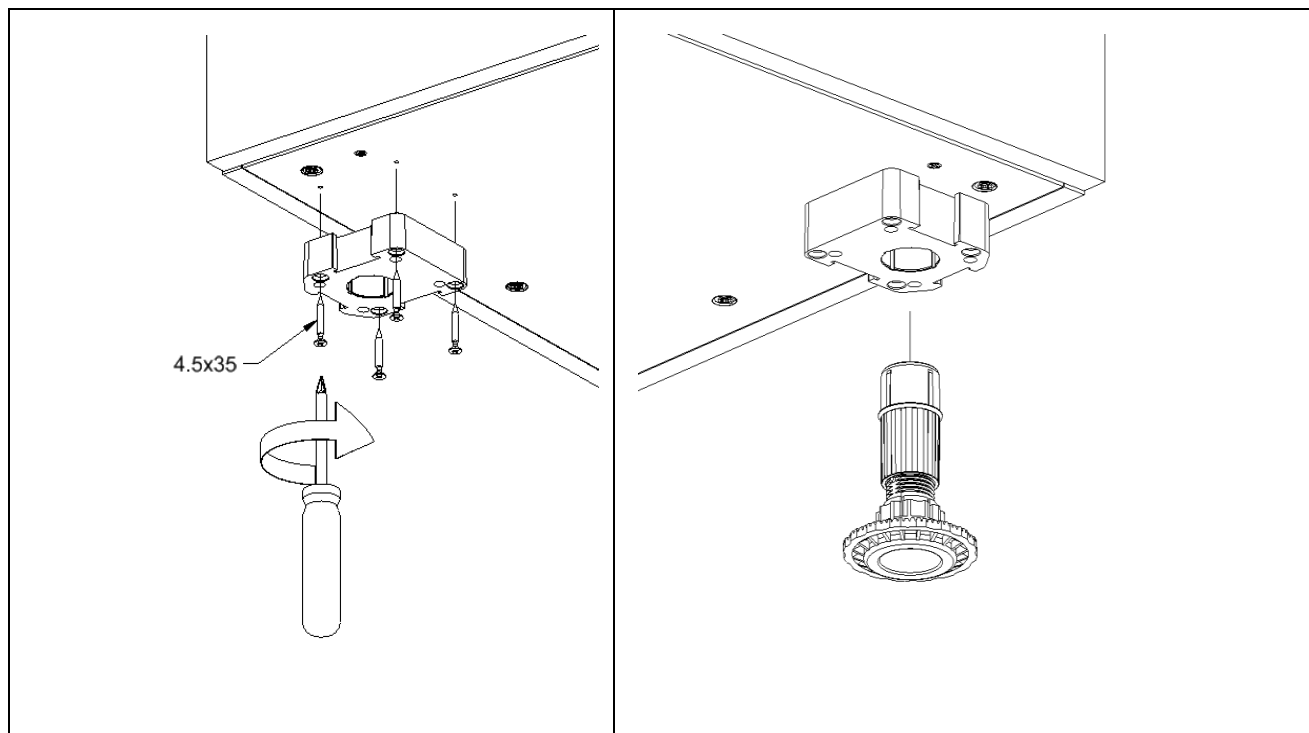


INSTALLING AND DISMANTLING  
INSTRUCTIONS

LEGS

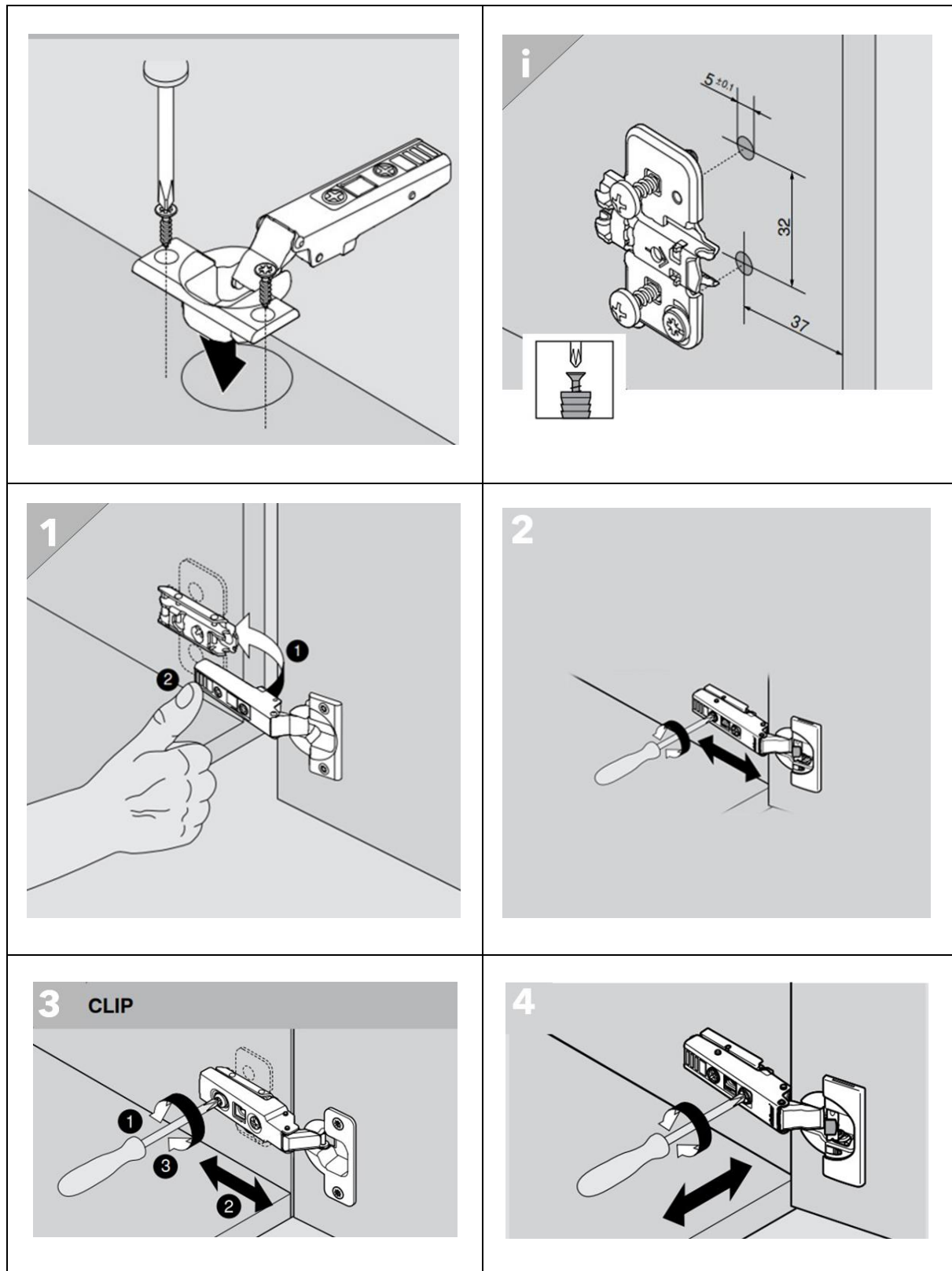
Leg	Plate
<div>→ Tube with screw-in glide</div> <div></div> <div></div>	<div>→ Mounting plate</div> <div></div> <div></div> <div></div> <div>Rectangular for screw fixing</div>



## Material information

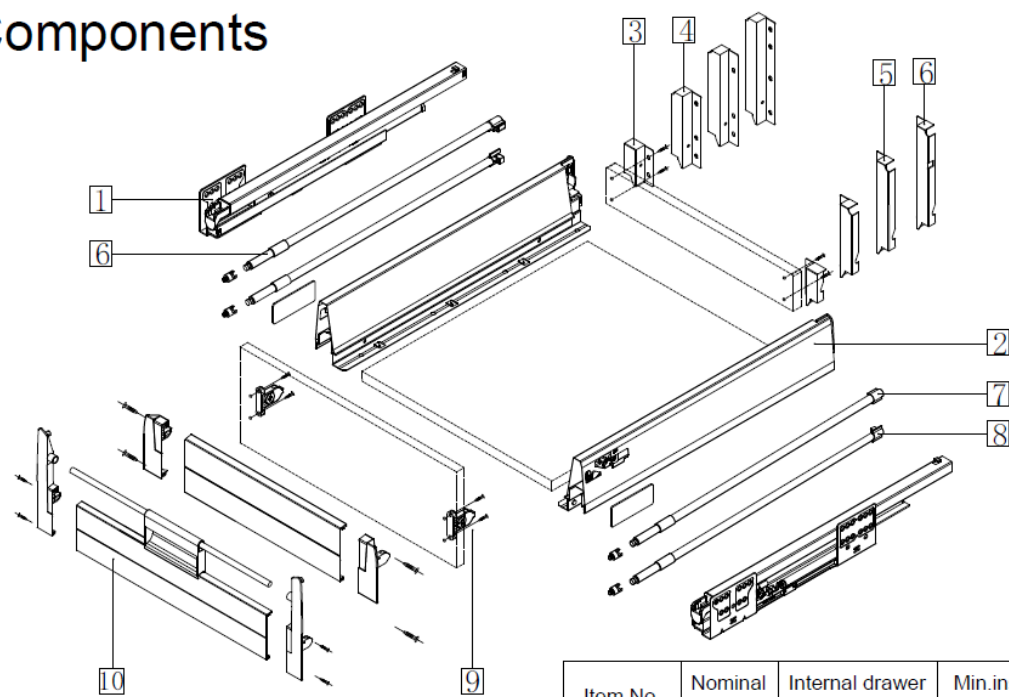
➤ <b>Material:</b>	Plastic
➤ <b>Colour:</b>	Black
➤ <b>Installation:</b>	For plug fitting into mounting plate Adjustable at the side and from above - 10 to +20 mm using adjusting tool.
➤ <b>Height adjustment:</b>	Adjustable at the side and from above - 10 to +20 mm using adjusting tool.
➤ <b>Height adjustment facility:</b>	Up to 80 kg/foot using ABS insert 637.76.423
➤ <b>Load bearing capacity:</b>	250 kg

## HINGES Instruction



DRAWERS

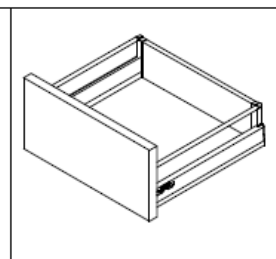
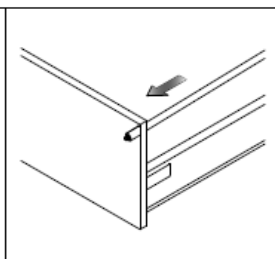
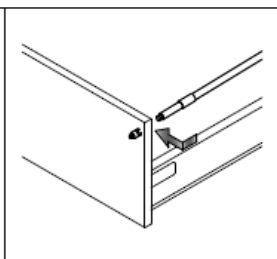
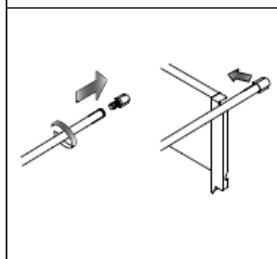
Components



Item No.	Nominal length	Internal drawer length	Min.installation length of drawer
	270mm	244mm	280mm
	300mm	274mm	310mm
	350mm	324mm	360mm
	400mm	374mm	410mm
	450mm	424mm	460mm
	500mm	474mm	510mm
	550mm	524mm	560mm

1.Cabinet profiles: (L/R)	6.204 Rear connecting bracket
2.Drawer profiles: (L/R)	7.Gallery tube
3.86 Rear connecting bracket	8.Middle tube
4.140 Rear connecting bracket	9.Front fixing brackets
5.164 Rear connecting bracket	10.Front panel

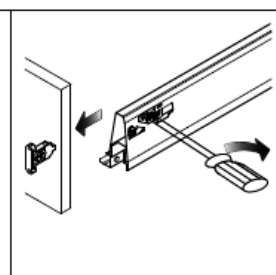
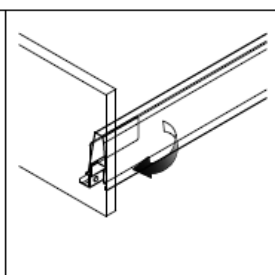
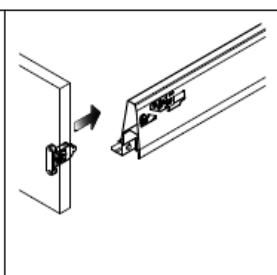
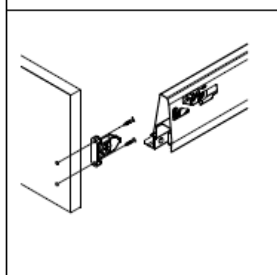
## Install assembly



## Installation & Disassembling manual

Install wooden drawer front

Disassemble wooden drawer front



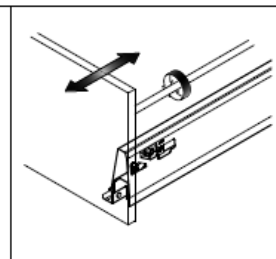
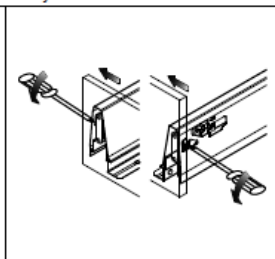
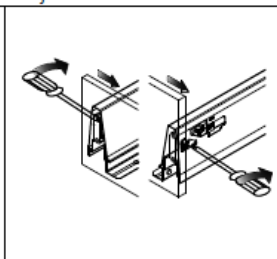
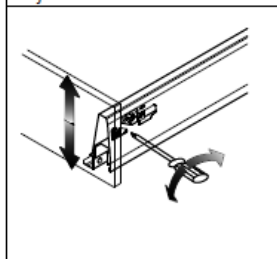
## Drawer front adjustment

Wooden drawer front height adjustment:  $\pm 2\text{mm}$

Drawer front right adjustment 1mm

Drawer front left adjustment 1mm

Gradient adjustment



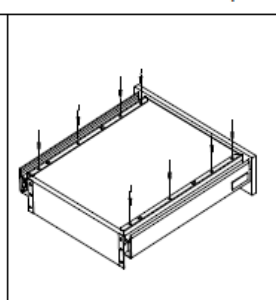
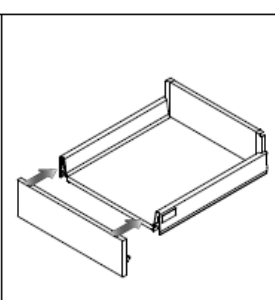
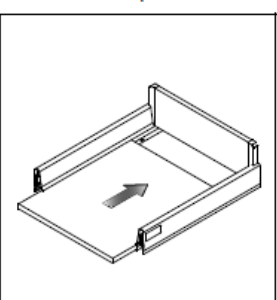
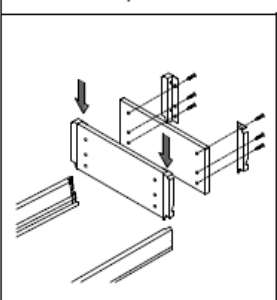
## Drawer assembly

Install back panel

Install bottom panel

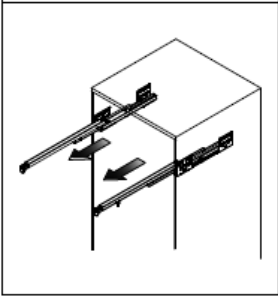
Install drawer front

Install screw for bottom panel

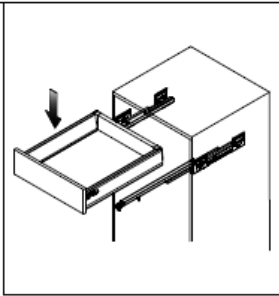


### Install & Dismantle of drawer

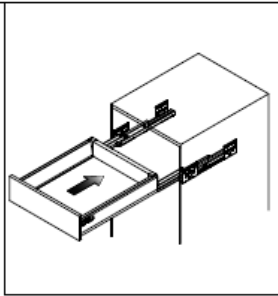
1.Sliding out the slides



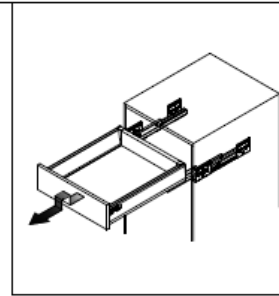
2.Method I :put the drawer from the top onto the slide



3.Method II :put the drawer from the front onto the slide



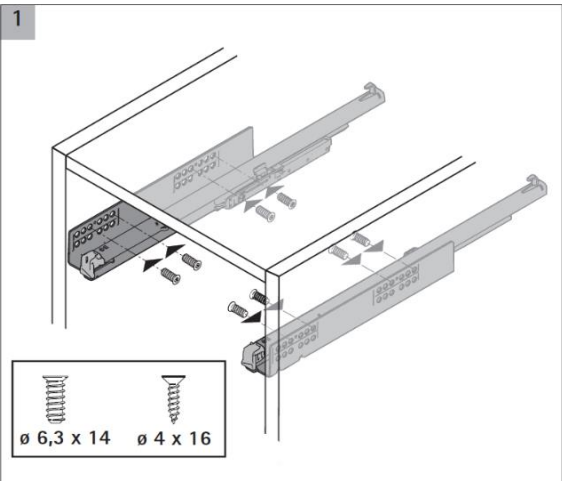
4.Lift the drawer up for dismantle



DRAWERS

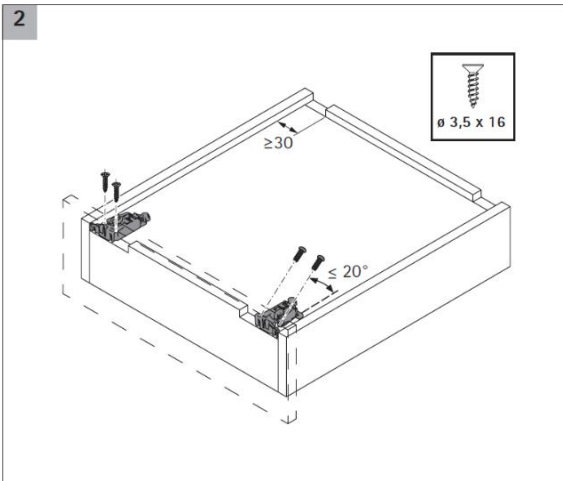
Instruction

1



ø 6,3 x 14    ø 4 x 16

2

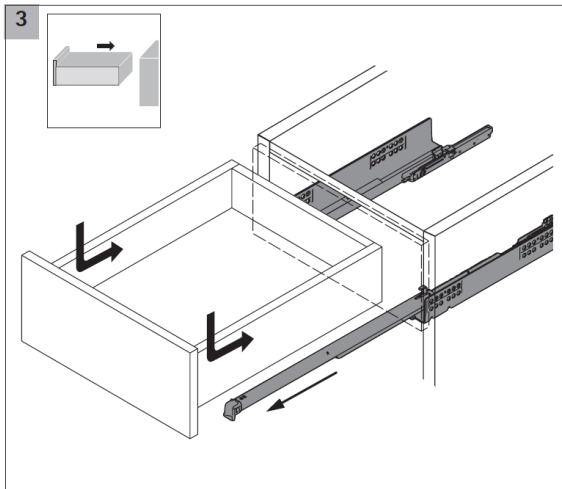


ø 3,5 x 16

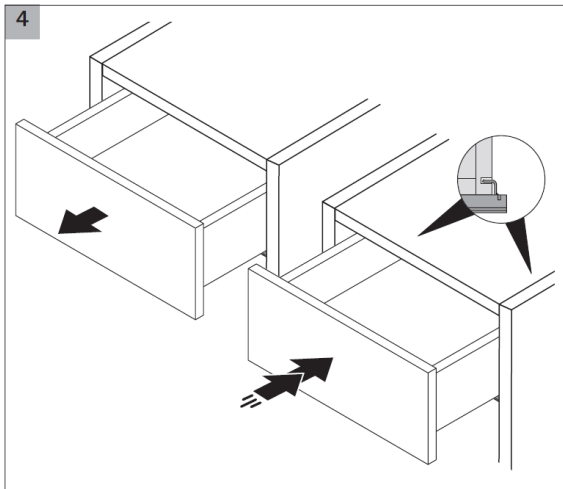
≥30

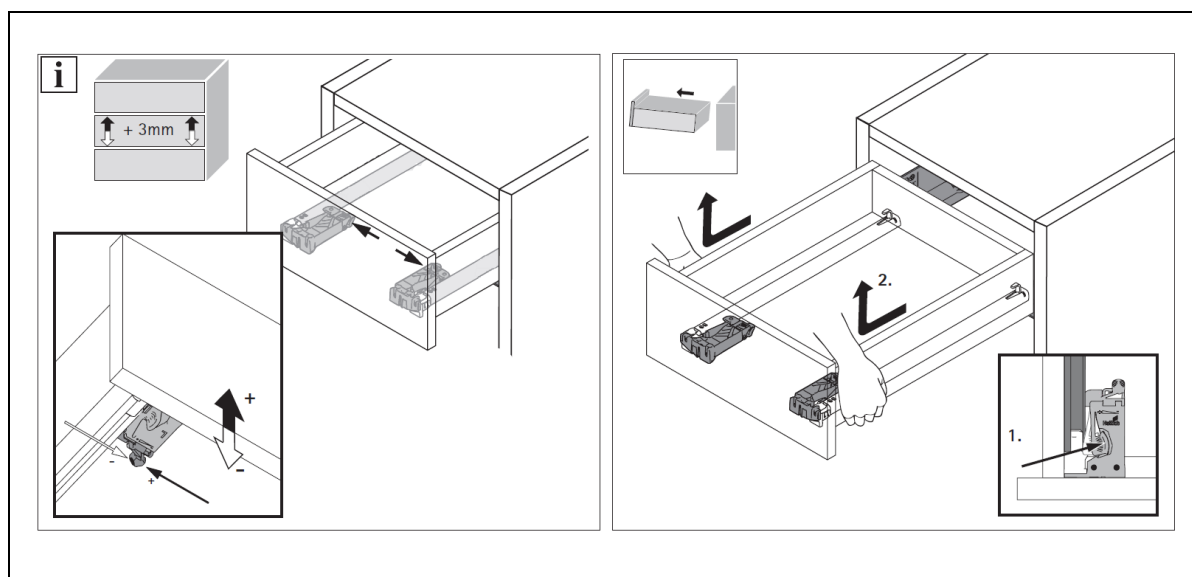
≤ 20°

3

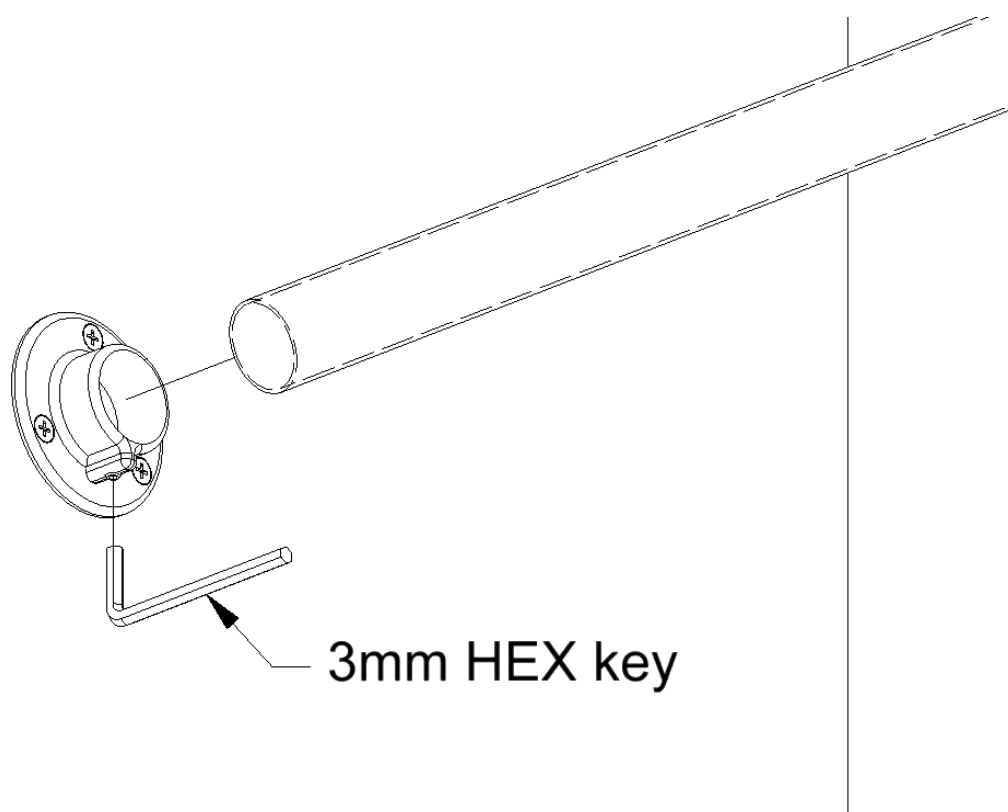


4





## TUBE



## **Legal Disclaimer**

The information contained in this technical sheet is for general informational purposes only. All drawings, designs, and other materials contained herein are the proprietary property of UAB TAUMONA and are protected by copyright, trademark, and other intellectual property laws. Unauthorized reproduction, distribution, or use of these materials without the express written consent of UAB TAUMONA is strictly prohibited.

The technical information provided is accurate to the best of our knowledge at the time of publication. However, UAB TAUMONA makes no representations or warranties of any kind, express or implied, about the completeness, accuracy, reliability, suitability, or availability of the information contained herein for any purpose. Any reliance you place on such information is therefore strictly at your own risk.

In no event will UAB TAUMONA be liable for any loss or damage, including without limitation, indirect or consequential loss or damage, or any loss or damage whatsoever arising from the use of this technical sheet or the information contained herein.

By using this technical sheet, you agree to indemnify and hold harmless UAB TAUMONA from and against any and all claims, damages, losses, liabilities, and expenses (including attorney's fees) arising out of or in connection with your use of the information contained herein.

For further information or to obtain written permission for use, please contact UAB TAUMONA at [office@taumona.com](mailto:office@taumona.com)